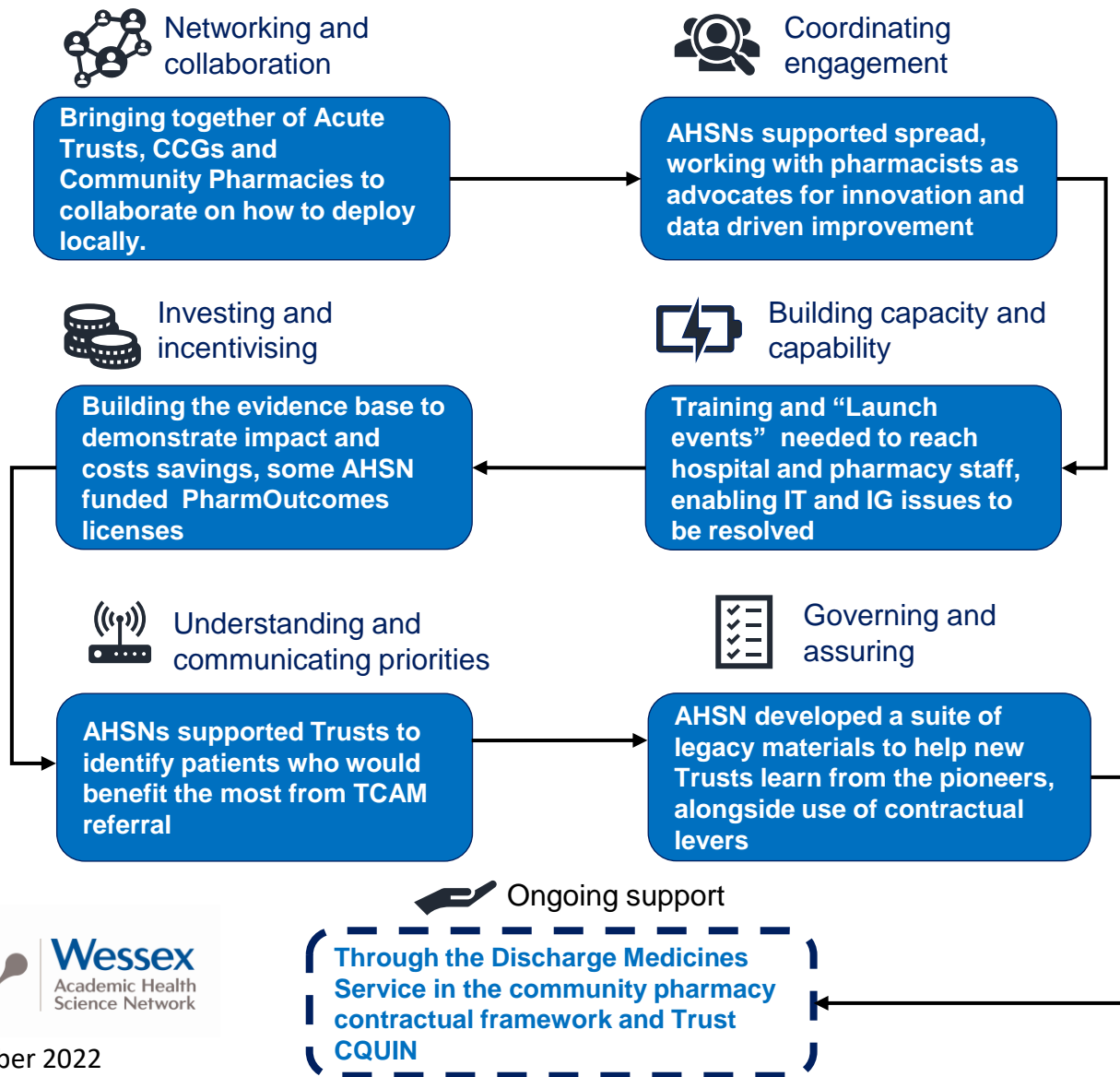


What methods and levers have been used to achieve spread?

TCAM case example



Transfer of Care Around Medicines (TCAM) enabled the automatic digital referral of discharged hospital patients to their own community pharmacy if there had been changes made to their medication while they were in hospital. Academic Health Science Networks (AHSNs) were critical and fundamental to the spread of TCAM. AHSNs utilised a range of methods in this.

Early evidence demonstrated that this service could reduce readmissions at 30,60 and 90 days. The AHSN national spread programme built on this evidence resulting in the services inclusion in key national contractual levers.

Key success factors in the sustained adoption and spread of TCAM included:

- Dedicated AHSN support to overcome IT and governance barriers
- Use of activity data, service evaluation and QI approaches
- Close working with local partners and networks as advocates and champions of the service
- Supporting the development of contractual levers to bring late adopters on board resulting in the national Discharge Medicines Service.
- Suite of legacy materials to help late adopters.

Challenges in the spread of TCAM include:

- Local IT and Governance issues